



# Measuring

REGO-FIX Measuring Technology

# Optimize process reliability with the REGO-FIX MasterBar test arbor



## PRECISE

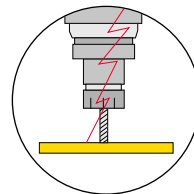
An intact tool spindle is the basis for precision. Runout errors of the tool spindle lead to vibrations, poor surface quality, increased tool wear and even tool breakage.

## PROCESS SAFE

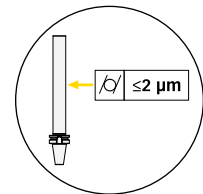
Periodic inspection of the tool spindle minimizes the risk of spindle damage and has a positive effect on process reliability.

## MasterBar

The test arbor is used to check and align the tool spindle. Each MasterBar comes with an individual inspection certificate.



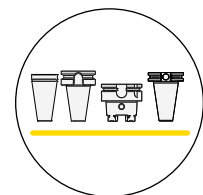
Avoid spindle errors thanks to regular inspection



Cylindricity of the test arbor  $\leq 2 \mu\text{m}$



QR-Code and serial number on removable ring



Various interfaces, manufacturer-independent



The packaging of two foam inserts allows horizontal as well as vertical storage and prevents deformation of the test arbor.

Type	Part No.	Dimensions [mm]	
		Ø Diameter	Length A
<b>MasterBar</b>			
ST 40/MBA 40x330*	7550.40000	40	330
ST 50/MBA 40x320*	7550.50000	40	320
CAT 40/MBA 40x340	7553.40000	40	340
BT+ 30/MBA 32x235**	7551.30600	32	235
BT+ 40/MBA 40x340**	7551.40600	40	340
HSK-A 50/MBA 32x240	7555.50000	32	240
HSK-A 63/MBA 40x350	7555.63000	40	350
HSK-A 100/MBA 40x349	7555.00000	40	349
HSK-E 20/MBA 15x090***	7556.20400	15	90
HSK-E 25/MBA 20x175***	7556.25400	20	175
HSK-E 32/MBA 24x180	7556.32400	24	180
HSK-E 40/MBA 24x180	7556.40400	24	180
ATC-E 15/MBA 10x070***	7556.15900	10	70

\*ST stands for Steep Taper, usable for SK/CAT + BT with appropriate pull stud.

\*\*BT+ is compatible with BT spindles.

\*\*\*For dimensional reasons without removable ring, serial number on flange.

# REGO-FIX Magnetic Indicator Base with fine adjustment for dial gauges



## USER-FRIENDLY

Easy and exact positioning due to the fixation of the joints via a handle. The magnetic base provides a stable basis for the articulated stand.

## FLEXIBLE

The dovetail mount and the clamping diameter ( $\varnothing$  8mm or 3/8") offer the highest flexibility for mounting dial gauges or dial test indicators.

## Magnetic Indicator Base

The articulated stand is ideal for use in the production or quality control, where precise measurements must be made. The simple operation allows fast and accurate alignment of the dial indicator.



Made in Switzerland



Maintenance free



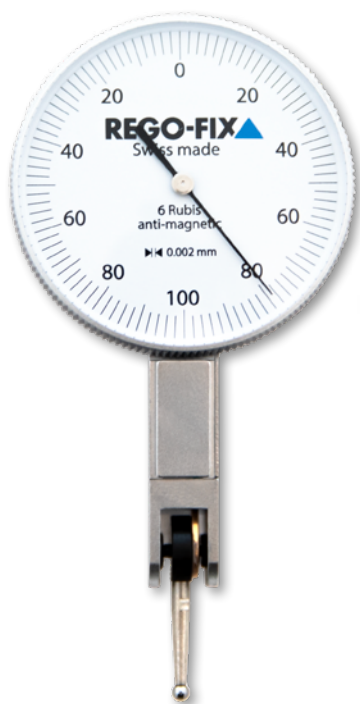
Holding force of the Articulated arm >5kg



Haltekraft des Magnetfusses 800 N

Type	Part. No.	Description	Operating range
<b>Magnetic Indicator Base</b>			
MIB 287	7561.00000	Magnetic Indicator Base with fine adjustment Metric	287 mm
MIB 11"	7561.00100	Magnetic Indicator Base with fine adjustment Inch	11"

# Improved measuring accuracy with the REGO-FIX $\mu$ -touch Dial Test Indicator



## OVERVIEW

The large dial with  $\varnothing$  37mm as well as a scale of  $2 \mu\text{m}$  can be read easily and accurately. Clamping possibility by dovetail guides or clamping shank  $\varnothing$  8mm.

## PRECISE

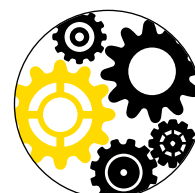
With a repeatability of  $1 \mu\text{m}$  and an overall deviation of max.  $3.5 \mu\text{m}$ , the REGO-FIX dial test indicator is the perfect measuring tool for precise measurements.

## $\mu$ -touch Dial Test Indicator

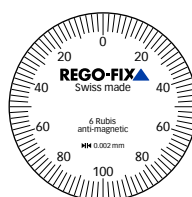
Dial test indicators are used to check tolerances, align machine tools and to check workpieces for deviations.



Made in Switzerland



Clockwork with ruby bearings



$2 \mu\text{m}$  scale and  
0.2 mm measuring range



Rotatable dial,  
for zero setting of the scale

Type	Part. No.	Description	Probe insert $\varnothing$ /L
<b><math>\mu</math>-touch Dial Test Indicator</b>			
DTI 0.002	7565.00200	$\mu$ -touch dial test indicator, 0.002 mm scale	$\varnothing$ 2 / L 12.5 mm

# Shorter setup time and higher precision with the REGO-FIX 3D-EdgeMaster



Available in metric and inch versions



QR-Code for accessing product information and inspection certificate



Delivered in high quality hard case

## SIMPLE

The large and clear dial facilitates the reading of the scale. The adjustment of the runout is easy and comfortable.

## ROBUST

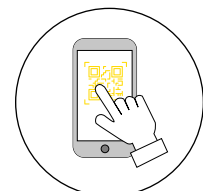
Due to the stable construction, the 3D-EdgeMaster is dust- and waterproof according to IP 67. The mechanism is protected by the predetermined breaking point in the probe insert.

## 3D-EdgeMaster

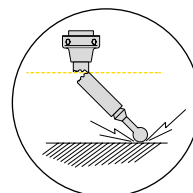
The 3D edgefinder is used for fast and precise probing of the reference edges, setting of the zero point and for measuring. The repeat accuracy is  $\leq 0.01$  mm.



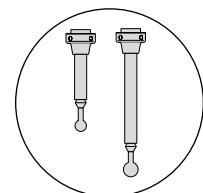
Dial and shank are available in metric and inch versions



Product information and inspection certificate are digitally available

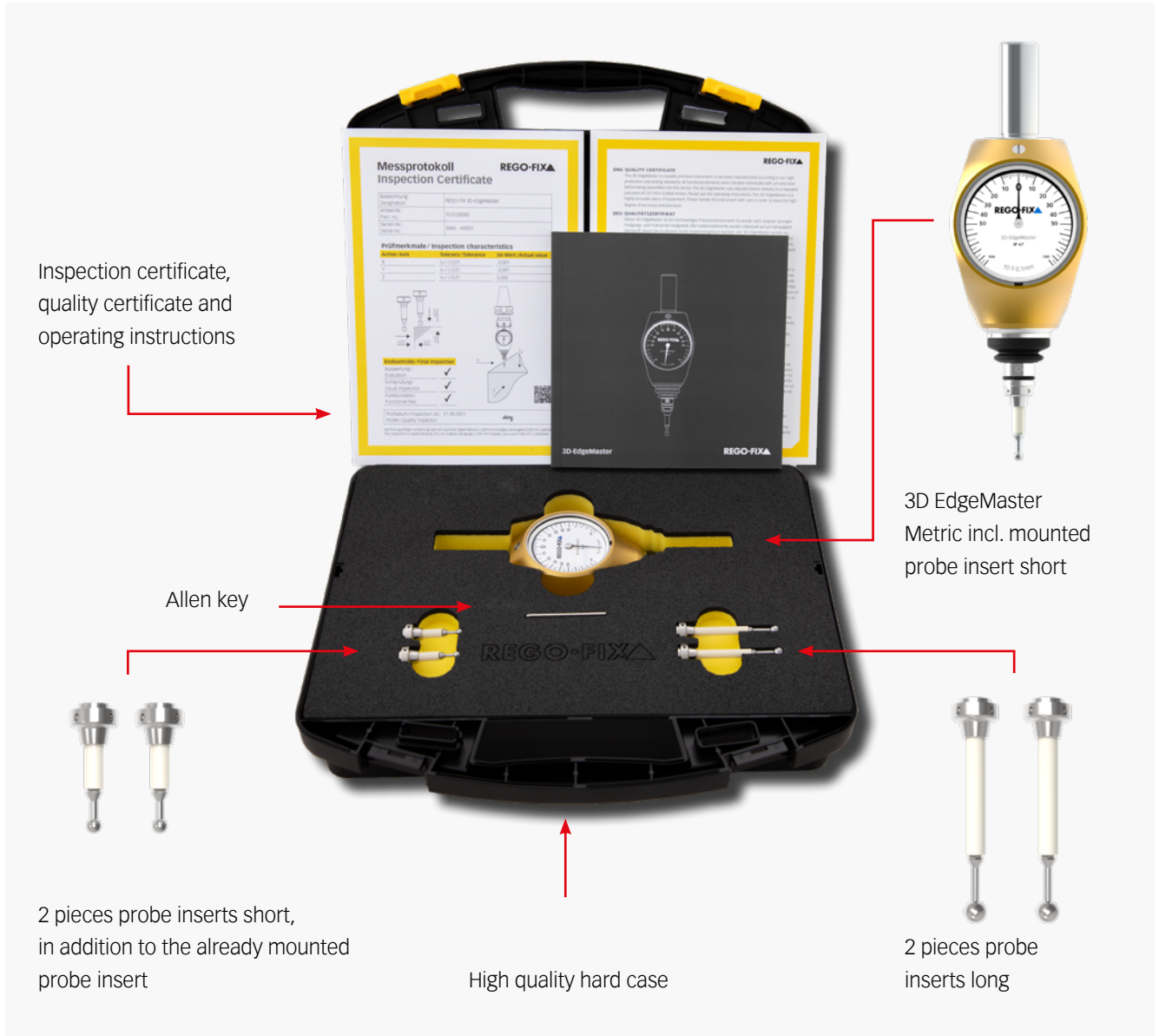


Probe insert with ceramic breaking point



Short and long probe inserts available

# The SET 3D-EdgeMaster includes:



Type	Part. No.	Description	Sizes Ø/L
<b>3D-EdgeMaster</b>			
SET 3D EMA-Metric	7510.00005	3D edge finder Metric, 2 short + 2 long probe inserts	Ø 16 mm
3D EMA-Metric	7510.00000	3D edge finder Metric + probe insert short	Ø 16 mm
SET 3D EMA-Inch	7510.00105	3D edge finder Inch, 2 short + 2 long probe inserts	Ø 5/8"
3D EMA-Inch	7510.00100	3D edge finder Inch + probe insert short	Ø 5/8"
TE EMA-Short	7515.00000	Probe insert short for 3D EMA	Ø 4/L 31 mm
TE EMA-Long	7515.00300	Probe insert long for 3D EMA	Ø 6/L 56.5 mm

